

EchoSonic II Manual

**LU23-0, LU27-0, LU28-0, LU29-0,
LU23-1, LU27-1, LU28-1, LU29-1 Series**



**Flowline Inc.
10500 Humbolt Street
Los Alamitos, CA 90720
Tel: (562) 598-3015
Fax: (562) 431-8507
www.flowline.com**

Preface

This manual explains how to use the EchoSonic II, LU23, LU27, LU28 and LU29 series ultrasonic level transmitter.

Warranty, Service & Repair

To register your product with the manufacturer, go to the Flowline website for on-line registration. The website address is as follows:

www.flowline.com

On-line Warranty Registration can be found under Contact Us in the Navigation Bar along the side of the home page.

If for some reason your product must be returned for factory service, go to the Flowline website to receive a Material Return Authorization number (MRA), providing the following information:

1. Full Part Number, Full Serial Number
2. Name and telephone number of someone who can answer technical questions related to the product and its application.
3. Return Shipping Address
4. Brief Description of the Symptom
5. Brief Description of the Application

On-line Material Return Authorization can be found under Contact Us in the Navigation Bar along the side of the home page. Click on *Return Authorization* to begin the MRA request. Once you have received a MRA number, ship the product prepaid in its original packing to:

Flowline Factory Service
MRA_____
10500 Humbolt Street
Los Alamitos, CA 90720

To avoid delays in processing your repair, write the MRA on the shipping label. Please include the information about the malfunction with your product. This information enables our service technicians to process your repair order as quickly as possible.



Warranty

Flowline warrants to the original purchaser of its products that such products will be free from defects in material and workmanship under normal use and service in accordance with instructions furnished by Flowline for a period, which is equal to the shorter of one year from the date of purchase of such products or two years from the date of manufacture of such products. Flowline's obligation under this warranty is solely and exclusively limited to the repair or replacement, at Flowline's option, of the products or components, which Flowline's examination determines to its satisfaction to be defective in material or workmanship within the warranty period. Flowline must be notified pursuant to the instructions below of any claim under this warranty within thirty (30) days of any claimed lack of conformity of the product. Any product repaired or replaced under this warranty will be warranted only for the remainder of the original warranty period.

Returns

Products cannot be returned to Flowline without Flowline's prior authorization. To return a product that is thought to be defective, go to www.flowline.com, and submit a customer return (MRA) request form and follow the instructions therein. All warranty and non-warranty product returns to Flowline must be shipped prepaid and insured. Flowline will not be responsible for any products lost or damaged in shipment.

Limitations

This warranty does not apply to products which: 1) are beyond the warranty period or are products for which the original purchaser does not follow the warranty procedures outlined above; 2) have been subjected to electrical, mechanical or chemical damage due to improper, accidental or negligent use; 3) have been modified or altered; 4) anyone other than service personnel authorized by Flowline have attempted to repair; 5) have been involved in accidents or natural disasters; or 6) are damaged during return shipment to Flowline. Flowline reserves the right to unilaterally waive this warranty and dispose of any product returned to Flowline where: 1) there is evidence of a potentially hazardous material present with the product; or 2) the product has remained unclaimed at Flowline for more than 30 days after Flowline has dutifully requested disposition. This warranty contains the sole express warranty made by Flowline in connection with its products. ALL IMPLIED WARRANTIES, INCLUDING WITHOUT LIMITATION, THE WARRANTIES OF MERCHANTABILITY AND FITNESS FOR A PARTICULAR PURPOSE, ARE EXPRESSLY DISCLAIMED. The remedies of repair or replacement as stated above are the exclusive remedies for the breach of this warranty. IN NO EVENT SHALL FLOWLINE BE LIABLE FOR ANY INCIDENTAL OR CONSEQUENTIAL DAMAGES OF ANY KIND INCLUDING PERSONAL OR REAL PROPERTY OR FOR INJURY TO ANY PERSON. THIS WARRANTY CONSTITUTES THE FINAL, COMPLETE AND EXCLUSIVE STATEMENT OF WARRANTY TERMS AND NO PERSON IS AUTHORIZED TO MAKE ANY OTHER WARRANTIES OR REPRESENTATIONS ON BEHALF OF FLOWLINE. This warranty will be interpreted pursuant to the laws of the State of California. If any portion of this warranty is held to be invalid or unenforceable for any reason, such finding will not invalidate any other provision of this warranty.

Introduction:

The EchoSonic II is a general-purpose ultrasonic level transmitter that provides a loop powered 4-20 mA output. The 4-20 mA output can be used to provide the proportional level of liquid in any tank or vessel. The signal can be connected to any device that accepts a loop powered 4-20 mA signal, such as a PLC, SCADA, DCS, display, controller, etc.

New Features

- Simple configuration with WebCal software, *no more target calibration*.
- Adjustable Loop Fail-Safe, Hold Last, Empty, Full, 21 mA, 22 mA
- Easy to reverse mA output, 4-20 mA to 20-4 mA
- Adjustable start-up condition, Empty, Mid (12 mA), Full, Over range (22 mA)
- Increased output filtering

Table of Contents

Introduction.....	4
New Features	4
About this manual	5
Specifications	7
Dimensions	7
Getting Started	8
USB® Fob Interface	9
WebCal	9
Step 1: Configuration	10
Step 2: Tank Levels	12
Step 3: Write to Unit.....	12
Wiring	13
Wiring Diagram	13
Wiring Connections	13
Wiring to Displays, Controllers & PLC's	14
Installation.....	16
Position and Mount.....	16
Mounting Guide	16
Fitting Selection	17
Tank Adapter:	17
Riser	17
Flange.....	18
Side Mount Fitting	18
Stand Pipe	19
Advanced Feature	20
Appendix	20
Updating WebCal Software	21
Updating Transmitter Firmware	23
Factory Defaults.....	23
Troubleshooting	24
User Settings	24

FLOWLINE

About this Manual:

PLEASE READ THE ENTIRE QUICK START PRIOR TO INSTALLING OR USING THIS PRODUCT.

This manual includes information on the EchoSonic II series Ultrasonic Level Switch from FLOWLINE.

Please refer to the part number located on the switch label to verify the exact model configuration, which you have purchased.

User's Responsibility for Safety:

FLOWLINE manufactures a broad range of level sensing technologies. While each of these sensors is designed to operate in a wide variety of applications, it is the user's responsibility to select a sensor model that is appropriate for the application, install it properly, perform tests of the installed system, and maintain all components. The failure to do so could result in property damage or serious injury.

Proper Installation and Handling:

Only professional staff should install and/or repair this product. Install the transmitter with the included Viton gasket and never over tighten the transmitter within the fitting. Always check for leaks prior to system start-up.

Wiring and Electrical:

A supply voltage of 12 to 28 VDC is used to power the EchoSonic II. Electrical wiring of the transmitter should be performed in accordance with all applicable national, state, and local codes.

Material Compatibility:

The enclosure is made of Polycarbonate (PC). The transducer is made of Polyvinylidene Fluoride (PVDF). Make sure that the model, which you have selected, is chemically compatible with the application media.

Enclosure:

While the transmitter housing is liquid-resistant the EchoSonic II is not designed to be operational when immersed. It should be mounted in such a way that the enclosure and transducer do not come into contact with the application media under normal operational conditions.

Safety;

- Installation should be done by properly trained staff
- Supply voltage should never exceed a maximum of 28 VDC
- Make sure the sensor is chemically compatible with your application
- Design a fail-safe system that accommodates the possibility of sensor and/or power failure.
- This sensor should not be used in classified hazardous environments

Make a Fail-Safe System:

Design a fail-safe system that accommodates the possibility of transmitter and/or power failure. FLOWLINE recommends the use of redundant backup systems and alarms in addition to the primary system.

Flammable, Explosive or Hazardous Applications:

EchoSonic II should not be used within classified hazardous environments.

Warning:

Always use the Viton gasket when installing the EchoSonic II, and make sure that all electrical wiring of the switch is in accordance with applicable codes.

Components:

EchoSonic II is offered in three different models. Depending on the model purchased, you may or may not have been shipped all the components shown below. You do however, need an EchoSonic II, USB® Fob and Viton® gasket to configure, install and operate EchoSonic II.

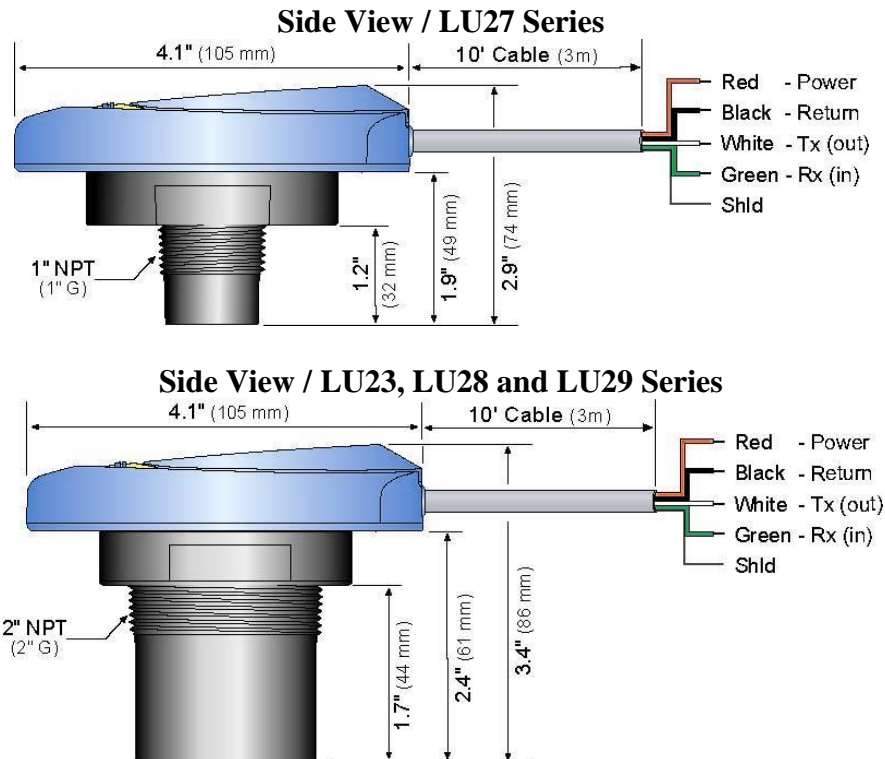
- EchoSonic II
 - LU27-01 - 9.8' (3 m) range, Type 6P encl., 1" NPT
 - LU27-11 - 9.8' (3 m) range, Type 6P encl., 1" G
 - LU23-01 - 18.0' (5.5 m) range, Type 6P encl., 2" NPT
 - LU23-11 - 18.0' (5.5 m) range, Type 6P encl., 2" G
 - LU28-01 - 26.2' (8 m) range, Type 6P encl., 2" NPT
 - LU28-11 - 26.2' (8 m) range, Type 6P encl., 2" G
 - LU29-01 - 32.8' (10 m) range, Type 6P encl., 2" NPT
 - LU29-11 - 32.8' (10 m) range, Type 6P encl., 2" G
- Viton Gasket
 - Part #200128 for LU27 series
 - Part #220129 for LU23, LU27 or LU29 series
- USB® Fob
 - Part #LI99-1001
- Quick Start Guide

FLOWLINE

Specifications:

Range:	LU27: 4" to 9.8" (10 cm to 3 m)	LU23: 8" to 18.0" (20 cm to 5.5 m)	LU28: 8" to 26.2" (20 cm to 8 m)	LU29: 8" to 32.8" (20 cm to 10 m)
Accuracy:	± 0.2% of range		Process temp.:	F: -4° to 140° C: -20° to 60°
Resolution:	LU27: 0.019" (0.5mm) LU23: 0.039" (1mm) LU28: 0.079" (2 mm) LU28: 0.079" (2 mm)		Temp. comp.:	Automatic
Dead band:	LU27: 4" (10cm) LU23/28/29: 8" (20cm)		Ambient temp.:	F: -31° to 140° C: -35° to 60°
Beam width:	LU27: 2" (5cm) LU23/28/29: 3" (7.6cm)		Pressure:	MWP = 30 PSI
Configuration:	WebCal® PC Windows® USB 2.0		Enclosure type:	Type 6P encapsulated, corrosion resistance & submersible
Memory:	Non-volatile		Encl. material:	Polycarbonate
Supply voltage:	24 VDC (loop)		Trans. material:	PVDF
Consumption:	0.5 W		Cable jacket mat.:	Polyurethane
Loop resistance:	500 Ohms @ 24 VDC		Cable type:	4-conductor shielded
Signal output:	4-20 mA, two-wire		Cable length:	10' (3 m)
Signal invert:	4-20 mA or 20-4 mA		Process mount:	LU27: 1" NPT (1" G) LU23/28/29: 2" NPT (2" G)
Signal fail-safe:	4 mA, 20 mA, 21 mA, 22 mA or hold last		Mount. gasket:	Viton®
			Classification:	General purpose
			Compliance:	CE, RoHS
			Approvals:	cFMu

Dimensions:



Getting Started:

EchoSonic II is configured through WebCal, a PC software program. WebCal is a free download from Flowline's website. **You must download and install WebCal prior to plugging in the USB® Fob.** Please go to <http://www.flowline.com>, click on WebCal Software and select your language version.

Configuration

The level sensor is configurable via our free WebCal PC software and Fob USB adapter. The sensors are offered with and without Fobs. Fobs are universal and can be used to configure any WebCal compatible product. Download your free copy of WebCal in English or Chinese.

Easy Configuration

- 169 different configurations
- Graphical configuration interface
- Install and test configuration in seconds
- PDF wiring diagram for each configuration
- Technical help menu with tips and glossary

Revision Control

- Save configuration files for future use or reference
- Print wiring diagram and configuration text files
- Email configuration files to other remote users

System Requirements

- Windows® XP & 2000
- USB® 2.0
- 10 mB hard disk space
- 256 mB RAM

Free Download

English Version

Chinese Version

WebCal System Requirements

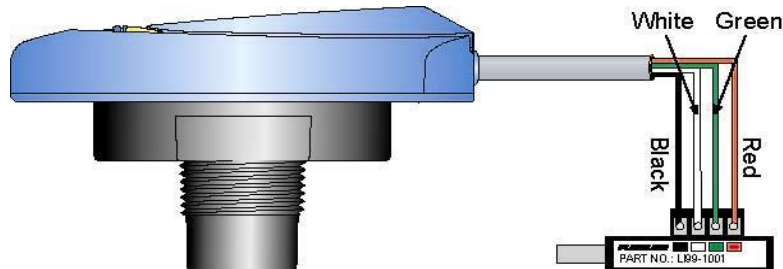
Windows® XP or 2000
10 mB hard drive space
256 mB RAM
1 USB® 2.0 port
Internet connection

FLOWLINE

USB® Fob Interface

EchoSonic II communicates with WebCal through a USB® interface called a Fob. Before plugging your Fob into your computer's USB® port, be sure that you have installed WebCal on your computer.

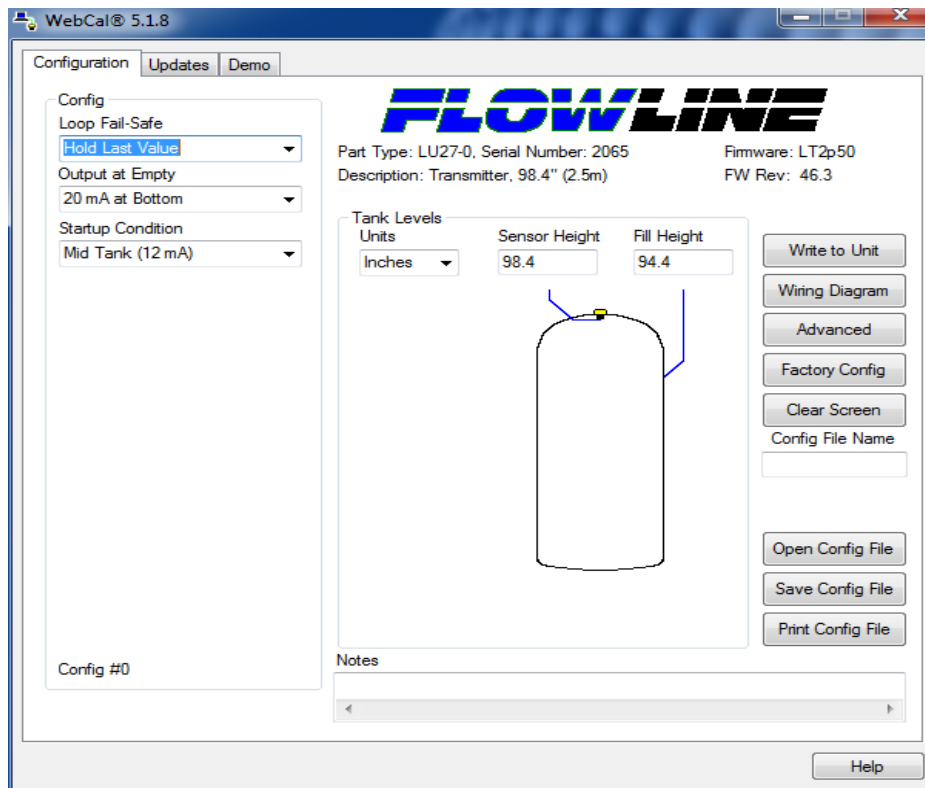
Connect the red, green, white and black wires from EchoSonic II into the correct terminals on the Fob. Tighten the screws on the terminals and plug your Fob into the USB® port of your computer.



- * Once EchoSonic II is configured and prior to installation, isolate the white and green wires from active power to prevent a short of the configuration circuit

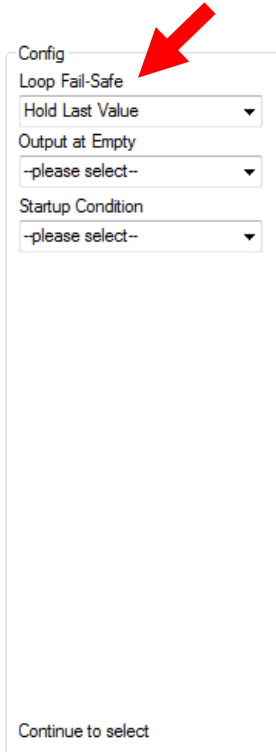
WebCal

With EchoSonic II connected to your computer, open the WebCal software by clicking on the WebCal icon. Follow steps 1-3 to configure the transmitter. Click "Help" in the lower right hand corner and open the help menu of WebCal for additional instructions on WebCal. If you need additional assistance using WebCal, please contact a Flowline Applications engineer at (562) 598-3015



WebCal Step 1: Configuration

This section of WebCal is where you select the application's configuration settings. Start from the top and work to the bottom, choosing the selections that are applicable to your configuration. "**Not Applicable**" will automatically show when a selection doesn't apply to your configuration settings, and you may move on. All configuration settings must be selected or have "**Not Applicable**" before you can continue to step 2. **Note:** Pressing the Clear Screen button will reset the configuration table and allow access to all of the features.



Config

Loop Fail-Safe
Hold Last Value

Output at Empty
-please select-

Startup Condition
-please select-

Continue to select

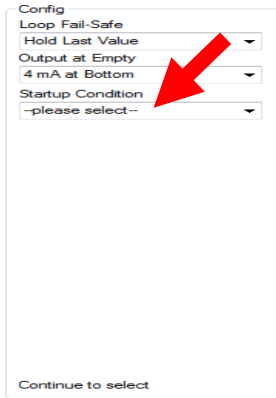
Loop Fail-Safe

This feature allows you to select the fail-safe current output if the sensor fails to detect a return signal (LOST). When the sensor regains signal, the output current will revert back to the current level condition.

- **Hold Last Value** - The output will remain in the same state as the last echo detected. Example: If the output was 6.7 mA just prior to the LOST signal, the device will continue to output 6.7 mA. When the sensor regains signal, the output will indicate the level when the signal was regain.
- **Empty** - The output will revert to the current value of an Empty tank. The empty state is dependent upon the *Output at Empty* setting. When *4 mA at Bottom* is selected, the sensor will output 4 mA when a fail-safe condition occurs. If *20 mA at Bottom* is selected, the sensor will output 20 mA when a fail-safe condition occurs
- **Full** - The output will revert to the current value of a Full tank. The full state is dependent upon the *Output at Empty* setting. When *4 mA at Bottom* is selected, the sensor will output 20 mA when a fail-safe condition occurs. If *20 mA at Bottom* is selected, the sensor will output 4 mA when a fail-safe condition occurs
- **Overfill (21mA)** - The output current will go to 21mA when the return signal is lost.
- **Overfill (22mA)** - The output current will go to 22mA when the return signal is lost.

Note: Right click on any menu that you may have questions on to open the help menu.

Note: To reset, press the Clear Screen button.



Config
Loop Fail-Safe
Hold Last Value
Output at Empty
4 mA at Bottom
Startup Condition
-please select-

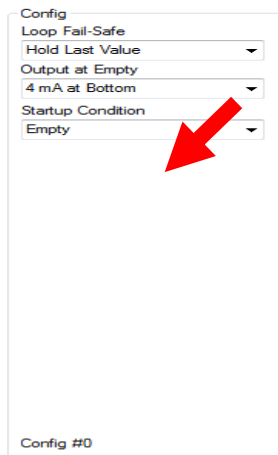
Continue to select

A red arrow points to the 'Output at Empty' dropdown menu.

Output at Empty

This feature allows you to select the orientation of the 4 to 20mA output (4 to 20 mA or 20 to 4 mA). Choose which output setting best fits the application. Typical installations are set with *4 mA at Bottom*. This will not affect the performance of the sensor other than the output of the EchoSonic II. WebCal's factory default is 4mA at bottom and 20mA at top. *When connecting your sensor to a display, you must account for your output settings.*

- **4mA at Bottom** - The output current will be 4mA when the sensor measures an empty tank and 20mA when the sensor measures a full tank.
- **20mA at Bottom** - The output current will be 20mA when the sensor measures an empty tank and 4mA when the sensor measures a full tank



Config
Loop Fail-Safe
Hold Last Value
Output at Empty
4 mA at Bottom
Startup Condition
Empty

Config #0

A red arrow points to the 'Startup Condition' dropdown menu.

Startup Condition

This feature allows the operator to select the output current on initial startup prior to acquiring a true return signal (level measurement). This only occurs during the initial powering of EchoSonic II and the transmitter will revert to the correct level reading when the level is acquired.

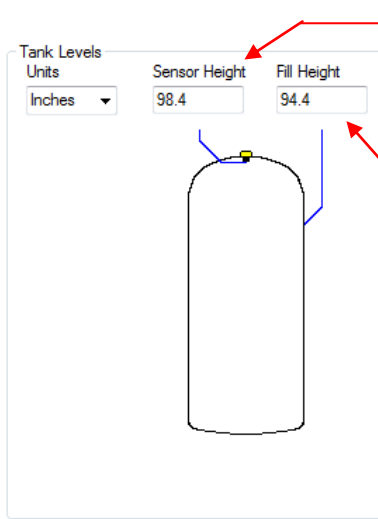
- **Empty** - Selects the start up current established in *Output at Empty*. Example: Select 4 mA at Bottom, the output will remain at 4 mA until the unit acquires a true return echo. Select 20 mA at Bottom, the output will remain at 20 mA until the unit acquires a true return echo.
- **Mid Tank** - When selected, the startup current will read 12 mA until the unit acquires a true return echo.
- **Full Tank** - Uses the opposite current that was selected in *Output at Empty*. Example: If you select 4 mA at Bottom then the start up current would be 20 mA. If you select 20 mA at Bottom then the start up current would be 4 mA.
- **Overfill (22mA)** - The output at startup would be 22 mA. This condition will remain until the unit acquires a true return echo.

Note: Right click on any menu that you may have questions on to open the help menu.

Note: To reset, press the Clear Screen button.

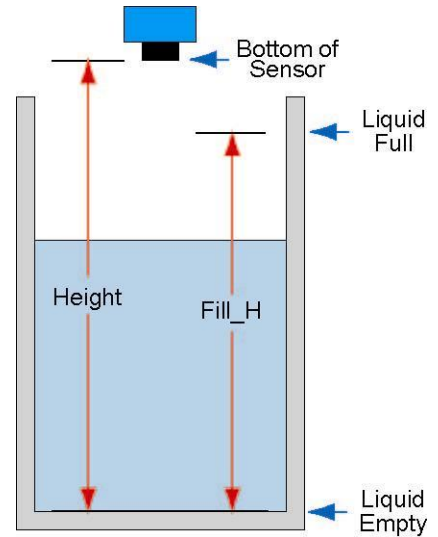
WebCal Step 2: Tank Levels

This section of WebCal is where you enter application measurement values. All values must be filled in before moving to step 3.



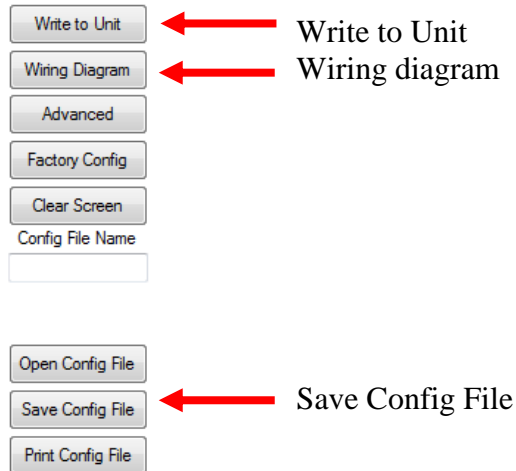
Sensor Height: Distance from the bottom of the tank to the bottom of the transducer.

Fill Height: Distance from the bottom of the tank to the maximum liquid height.

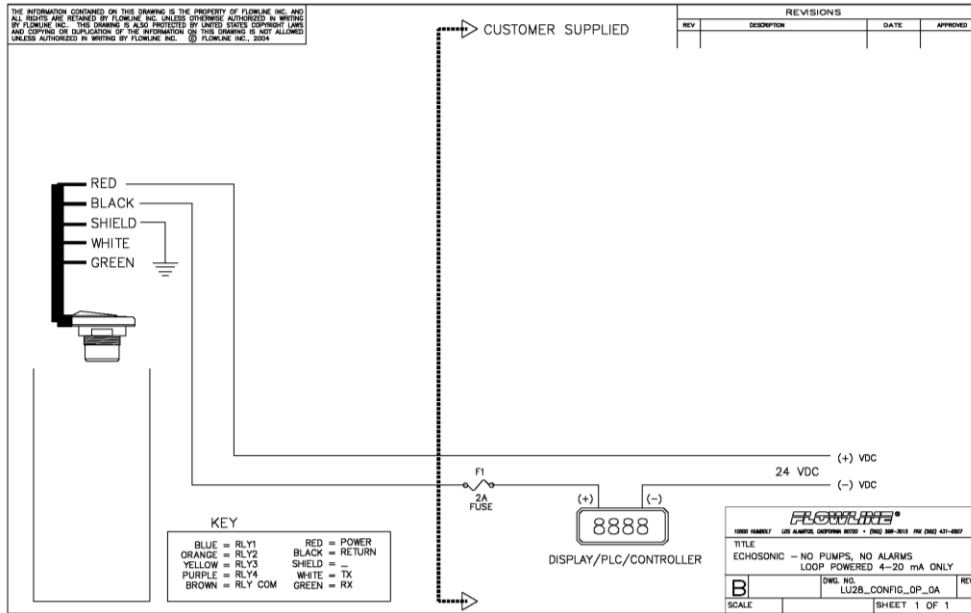


WebCal Step 3: Write to Unit

After you have entered configurations and tank values, click “**Write to Unit**” and send the configuration to your EchoSonic. Now use WebCal’s file management features to save your configuration by clicking “**Save Config File**” and print your wiring diagram by clicking “**Wiring Diagram**.”



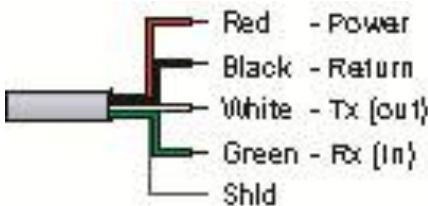
Wiring Diagram



Wiring EchoSonic II

After you have finished positioning and mounting EchoSonic II, follow WebCal's wiring diagram to wire EchoSonic II. Flowline recommends using a qualified licensed electrician to wire EchoSonic II and your application's components.

Wire Connections:



Red & Black

Red and Black leads are for connection to a 24 VDC power supply or to a 4-20 mA loop power source. The red and black wires can be extended up to 1,000 feet using a 22 gauge or larger wire, however do not extend the green and white wires.

White & Green

White and Green leads are reserved for use with WebCal and should not be connected during usage in the application. These wires should not be connected to WebCal while power is supplied from any source other than the LI99 series Fob.

Note: Once EchoSonic is configured, isolate the white and green wires from active power to prevent a short of the configuration circuit.

Note: Do not extend the White & Green wires beyond 15'.

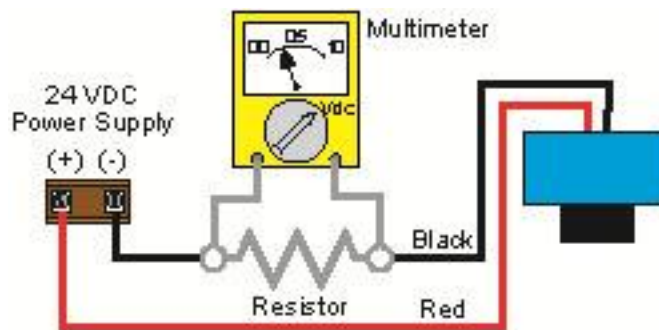
General notes for electrical connections, usage and safety:

- Where personal safety or significant property damage can occur due to a spill, the installation must have a redundant backup safety system installed.
- Wiring should always be completed by a licensed electrician.
- Supply voltage should never exceed 28 VDC.
- The sensor materials must be Chemically compatible with the liquids to be measured.
- Design a fail-safe system for possible sensor and/or power failure.
- Never use the sensor in environments classified as **Hazardous**.

Voltage Output

EchoSonic II can be used as a 0 to 5 or 0 to 10 VDC output device. A resistor will need to be added to the circuit to enable a voltage output (refer to the wiring diagram below).

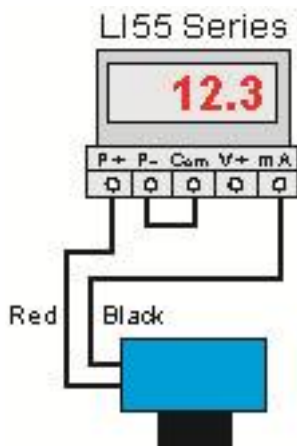
- 0-5 VDC output
 - Add a 250 Ohm resistor
 - Actual output will be 0.8 to 5 VDC
- 0-10 VDC output
 - Add a 500 Ohm resistor
 - Actual output will be 2 to 10 VDC



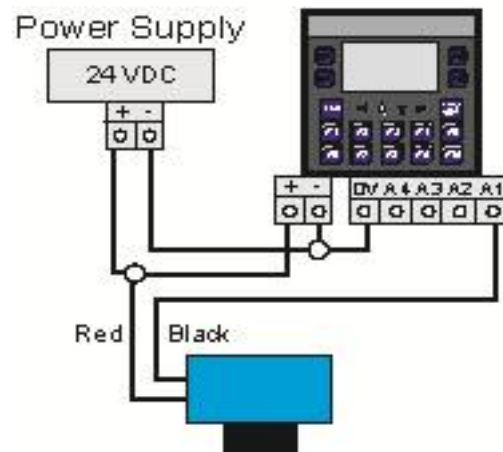
Wiring to Display, Controllers & PLC's

Below is a quick review of wiring the EchoSonic II to common display, controllers and PLC's.

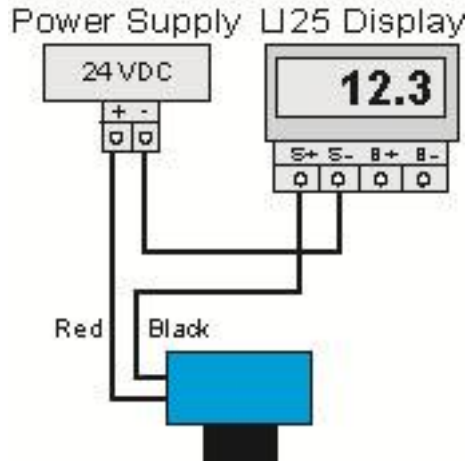
DataView LI55 Series Level Controller



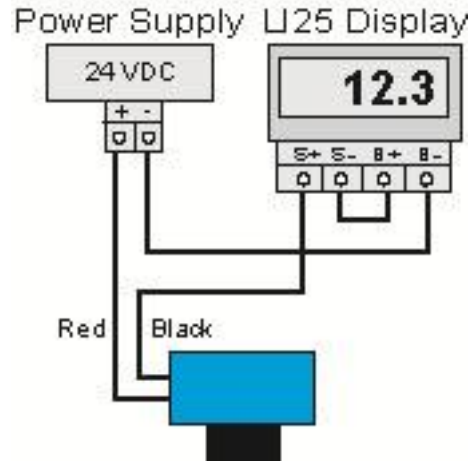
Commander LI90 Series Multi-Tank Level Controller



*DataLoop LI25 Series
Level Indicator
without the backlight*

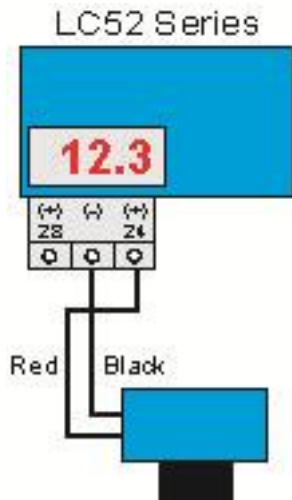


*DataLoop LI25 Series
Level Indicator
with the backlight*

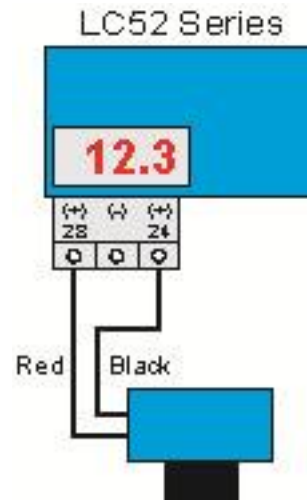


Wiring to Display, Controllers & PLC's (continued)

*DataPoint LC52 Series
Level Controller
JWA mode (Factory Setting)*

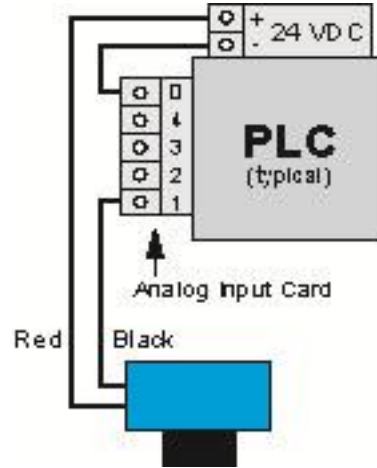
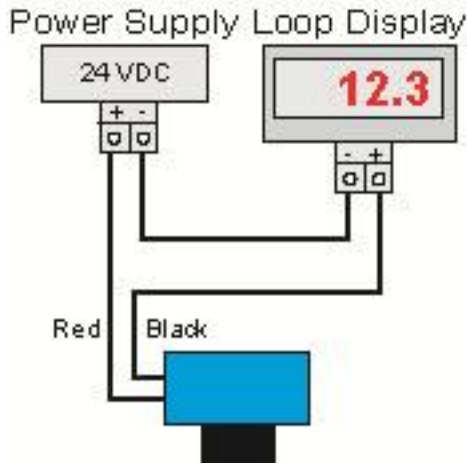


*DataPoint LC52 Series
Level Controller
JWB mode*



*Generic Loop
Powered Display*

Generic PLC



Installation

The EchoSonic II should always be mounted perpendicular to the liquid surface and installed using the provided Viton mounting gasket. Make sure that the fitting and transmitter threads are not damaged or worn. Always *hand-tighten* the transmitter within the fitting. Perform an installed leak test under normal process conditions prior to system start up. **Note:** *The preferred mounting fitting for the LU27 series is the LM52-1400 (2" thread x 1" thread) reducer bushing.*

Mounting Guide

1. Do not mount at an angle
2. Liquid should never enter the dead band
3. Side Wall:
 - a. For LU27 Series - mount at least 2" from the side wall
 - b. For LU23, LU28 & LU29 Series - mount at least 3" from the side wall
4. Do not mount where obstacles will intrude on sensor's beam width
 - a. See Specifications on page 8
5. Do not mount in a vacuum
6. Avoid mounting in the center of a dome top tank.
7. In cone bottom tank, position the sensor over the deepest part of the tank.

<p><i>Do not install at angle relative to the liquid.</i></p>		<p><i>Do not install within 3" of tank sidewall.</i></p>	
<p><i>Do not install with objects in the beam.</i></p>		<p><i>Do not install in applications with vacuum.</i></p>	

Installation in existing fittings

If the existing fitting is larger than the threads of the EchoSonic II, select a reducer bushing such as the LM52-1400 (2" thread x 1" thread) or LM52-2400 (3" thread x 2" thread).

Metal Tanks (LU27 series)

Flowline ultrasonic transmitters have been optimized for use in non-metallic fittings.

1. For best performance, avoid the use of metallic fittings.
 - a. Use a plastic 2" x 1" reducer bushing, such as the LM52-1400 or a plastic 1" flange, such as the LM52-1850 for metallic tanks.
2. While installations directly into a 1" metal fitting are not recommended, acceptable results may be obtained if the 1" fitting is a half coupling in form and the outer diameter of the coupling is tightly wrapped in vinyl tape to dampen vibrations.

Fitting Selection:

Check the part number to determine the required fitting mount size and thread type. EchoSonic II is commonly installed in tank adapters, flanges, brackets or standpipes. Note: Always include the gasket when installing the EchoSonic II.

1. **Tank Adapter:** Select a tank adapter fitting, such as the LM52-1890 for the LU27 series or the LM52-2890 for the LU23, LU28 & LU29 series.
 - a. *For best results, select a 2" tank adapter and add a reducer bushing such as the LM52-1400, thread x thread, reducer bushing.*
 - b. Avoid tank adapter (thread x thread) styles and/or pipe stops forward of the installed transducer.

**2" Tank Adapter
Socket x Thread**



**Tank Adapter
w/ 2"x1" Reducer Bushing**



**Tank Adapter
Thread x Thread**



Do not use thread x thread

2. **Riser:** Installations with tall, narrow risers can impede the acoustic signal.
 - a. **LU23, LU28 & LU29 Series:** 2" (5 cm) diameter risers should be no taller than 5" (12.7 cm). Larger diameter risers should be no taller than 12" (30.5 cm).
 - b. **LU27 Series:**

	Riser Specifications	
	Inner Diameter	Maximum Height
	2" (5 cm)	3' (7.6 cm)
	4" (10 cm)	8' (20 cm)
	6" (15 cm)	12' (30 cm)

Note: Do not exceed the dimensions listed above

2. Flange (LU27 series):

If installing on a flange, select a flange with a thread that is above the plane of the flange, such as the LM52-1850.

- a. *The LU23, LU28 & LU29 series works well with Flange installations.*
- b. Avoid the use of blind flanges with tapped threads or flanges where the threads are even with the plane of the flange, such as the Banjo 1" Poly ANSI Flange (series AF100).
- c. Use a flange with a 2" thread and add a 2" to 1" reducer bushing to complete the installation.

**2" Flange w/
thread out of plane**



**2" Flange w/
thread in plane**



Do not use thread in plane

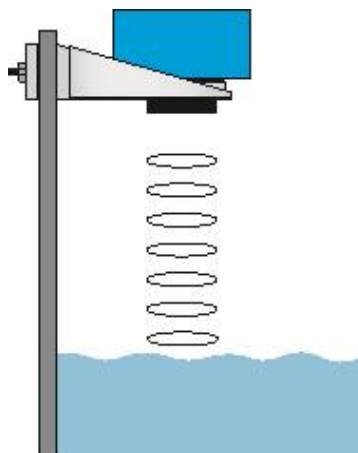
**2" Flange w/
Reducer Bushing**



3. Side Mount Bracket:

For installations in open tanks and sumps, use the LM50 series side mount bracket.

- a. For the LU27 series, order the LM50-1001-1, which includes a 2"x 1" Reducer Bushing.
- b. For the LU23, LU28 & LU29, series, order the LM50-1001 side mount bracket.

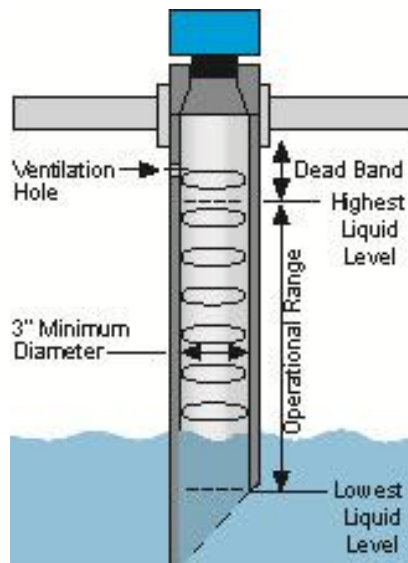


FLOWLINE

4. Stand Pipe:

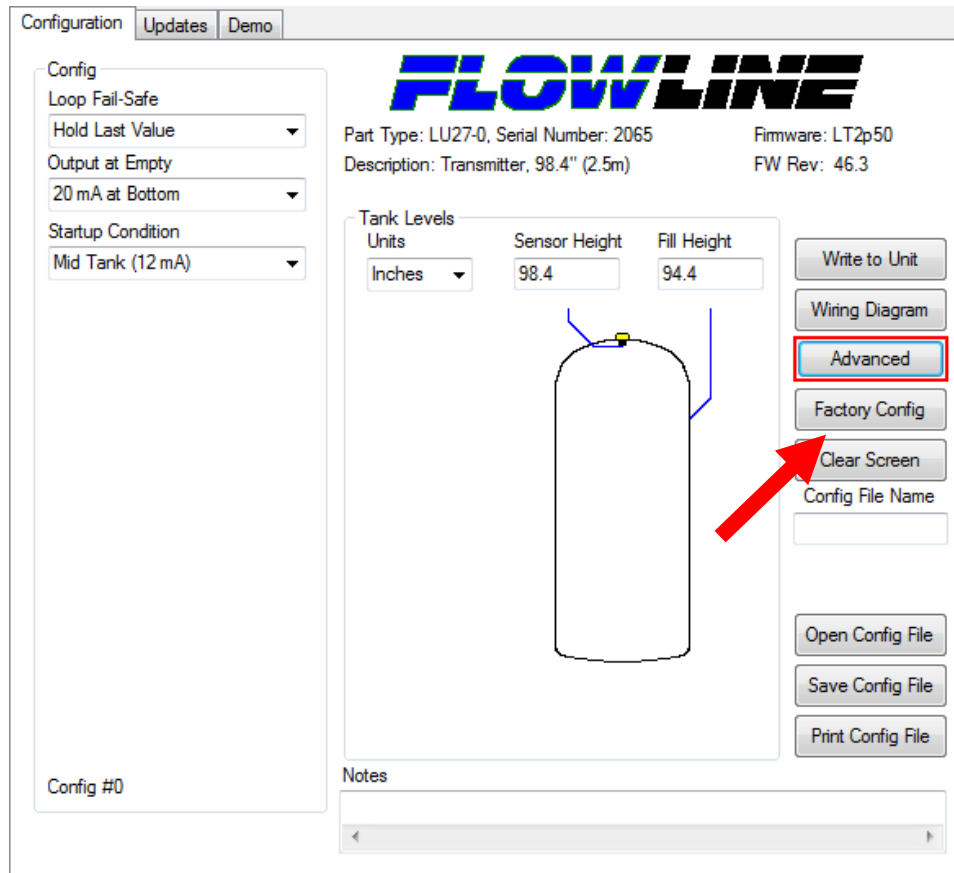
A standpipe may be used to dampen turbulence or when foam is present in the application.

- a. Pipe can be made of any material.
- b. Select a minimum 3" ID pipe for the stand pipe.
 - i. A 2" pipe is usable with the LU27 series, but is the minimum.
 - ii. Pipes larger than 3" can also be used.
- c. Use a coupling and reducer bushing to attach the EchoSonic II to the pipe.
 - i. With the LU27 series, be sure to use a plastic reducing bushing such as LM52-1400 2" T x 1" T fitting or the LM52-1410 2" S x 1" T fitting.
- d. The pipe length should run the measurement span and the bottom of the pipe should remain submerged at all times to prevent foam from entering the pipe.
- e. Cut a 45° notch at the bottom of the pipe and drill a 1/4" pressure equalization hole in the dead band.
- f. The pumps should not drive liquid past the open end of the stand pipe which causes the liquid in the pipe to oscillate.

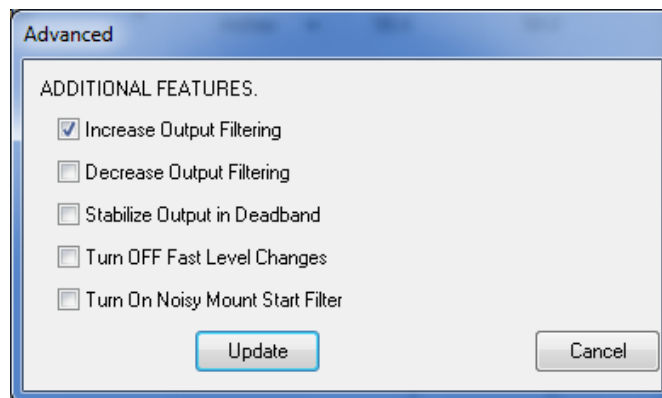


Advanced Features

This tool is designed to help solve operational issues. Changing these setting will alter the performance of your unit. Please read through this HELP file to assist you in making adjustments or if still unclear about a specific issue, please contact FLOWLINE, Applications Engineering.



NOTE: When the Advanced Button is highlighted with a RED border, this indicates you have selected an advanced feature...



- **Increase output filtering:** Placing a check mark in the box will increase the filtering (averaging) of the analog output. If you require the 4 to 20 mA output to be smooth for the application such as Open Channel Flow measurement, you might check this box.

FLOWLINE

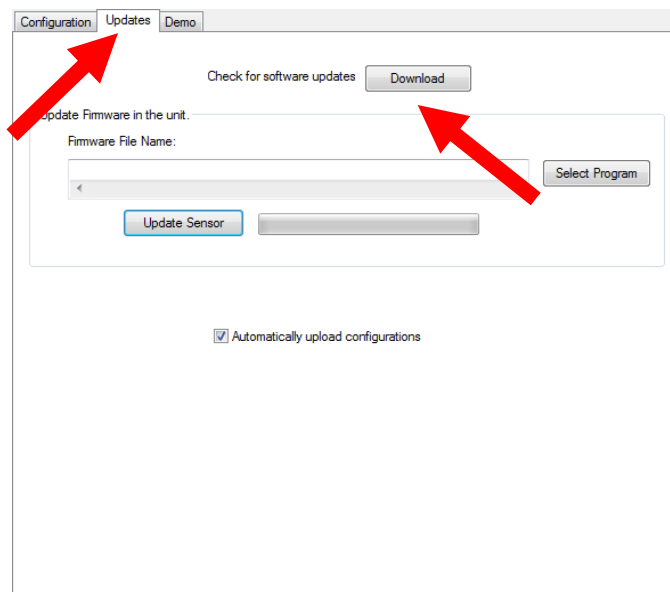
- **Decrease Output Filtering:** Placing a check mark in the box will eliminate all filtering (averaging) of the analog output. Enables a pulse by pulse level reading. Use this filter to see changes in level after every sound pulse.
Note: Never check increase output filtering and decrease output filtering at the same time.
- **Stabilize Output in Deadband:** Placing a check mark in the box will activate a filter to hold the output at Full if the level enters the dead band of the EchoPod. This filter requires the level to leave the dead band at a smooth and steady rate.
- **Turn OFF Fast Level Changes:** Placing a check mark in the box will turn off the filter enabling fast level changes. Use this filter if your application has very smooth, slow and steady level changes. The filter instructs EchoPod to look only for small incremental changes in level.
- **Turn ON Noisy Mount Start Filter:** Placing a check mark in the box will activate a filter that reduces sound interference from the installation mount. Use this filter if the EchoPod will not go to full range in the installation.

Appendix

Updating WebCal Software

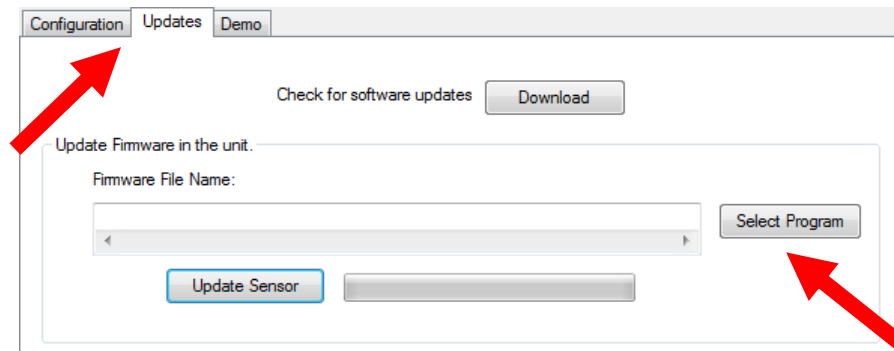
WebCal software can be updated directly from the software. Simply click on the **Updates** Tab at the top of the window and press the **Download** button. Make sure that your computer has access to the Internet. If not, an error window will appear.

When the **Download** button is pressed, the software will check the version of software you re using with the most recent version at Flowline. If the versions are similar, a window indicating that the most recent version is installed. If not, then a window will appears asking to download the latest version. Follow the instructions for installing the latest version.

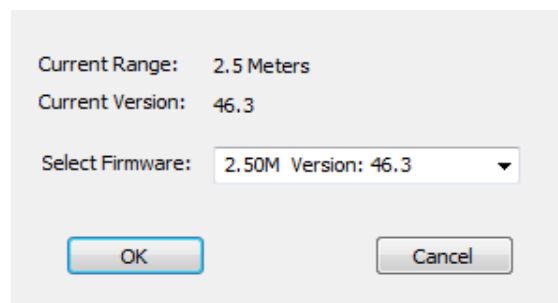


Updating Transmitter Firmware

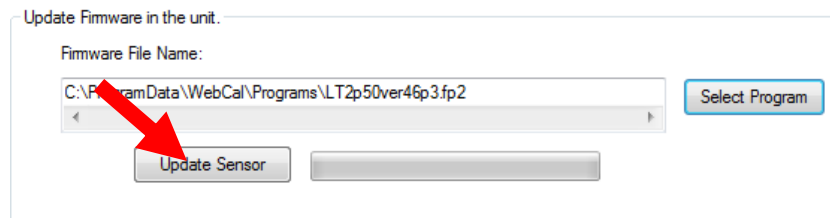
WebCal software can also be used to update the firmware inside the EchoSonic II transmitter. This feature allows the transmitter to be updated when new features are added. First open WebCal with an EchoSonic II transmitter connected and the latest version of WebCal downloaded to your PC.



Click on the **Updates** Tab and then click on **Select Program** to select the Firmware update.



Select the latest version of the firmware file and click on OK.



Confirm that the address is correct and then click on **Update Sensor** to begin the firmware update. This step should take less than 1 minute. You can follow the progress with the status bar to the right of the Update Sensor button. When completed, click on the Configuration tab to configure the transmitter. *Remember, when the firmware has been updated, the unit will return to its original factory settings.*

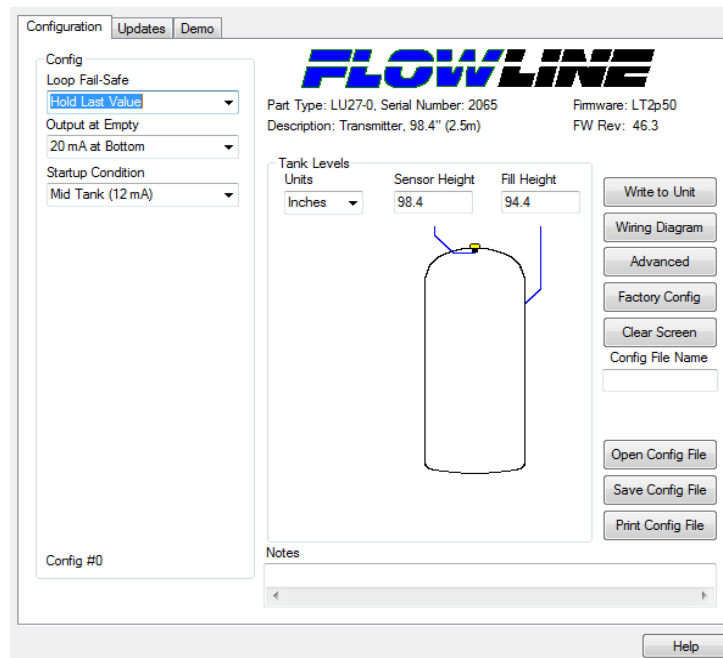
- If there is a communication interruption during the update, the process will stop. It is OK to click on Update Sensor again to start the process over again.

Factory Default

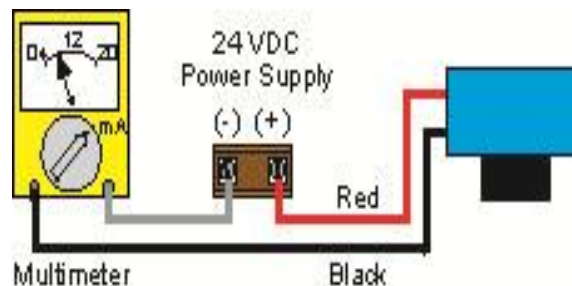
Pressing the **Factory Config** button in the Configuration menu will return the screen to the following settings. Out of the box, the EchoPod will output a 4-20 mA output that is maximized for its operational range. The transmitter can be used in the original factory setting without configuration with WebCal. Use the table below to identify the configuration of the sensor out of the box.

Factory Defaults Table

Part Number	Sensor Height	Fill Height	Loop Fail-Safe	Output at Empty	Startup Condition
LU27-01 LU27-11	300 cm (118.1")	290 cm (114.1")	Overfill (22 mA)	4 mA @ Bottom	Empty
LU23-01 LU23-11	550 cm (216.5")	530 cm (208.7")	Overfill (22 mA)	4 mA @ Bottom	Empty
LU28-01 LU28-11	800 cm (315.0")	780 cm (307.1")	Overfill (22 mA)	4 mA @ Bottom	Empty
LU29-01 LU29-11	1000 cm (393.7")	980 cm (385.8")	Overfill (22 mA)	4 mA @ Bottom	Empty



Testing the Transmitter



1. Connect a multimeter in series with the black wire to read the current output.
2. Verify that the current increases (tank filling) and decreases (tank emptying) appropriately in the calibrated span.
3. If not, carefully observe and attempt to correlate any installation, level or application event for more specific troubleshooting direction.

Troubleshooting

PROBLEM	SOLUTION
Transmitter indicates a current of 0 mA	Check the wiring for an open circuit. An open circuit is the most common issue with a 0 mA signal
Transmitter jumps to a current reading between 19 and 20 mA	Check the installation of the transmitter. Bad installation fittings will cause false signals near the top of the tank, which typically translates to a signal between 19 and 20 mA. Also look for interference just below the transmitter. If the transmitter is installed in a metal fitting, switch to a plastic fitting.
Transmitter indicates a current over 23 mA	Immediately check the wiring for a short circuit. The EchoSonic II is current limited to 22 mA. Anything above 23 mA indicates a short circuit.
Transmitter always jumps to LOST condition	Check the dimensional configuration (Height and Fill-H) of the EchoSonic II. Make sure that the Fill-H setting corresponds to the full level of liquid (from the bottom up) and not the distance from the transmitter to the liquid (top down).
Output of transmitter is opposite of the level of liquid	Check the Output at Empty Setting. Make sure the setting is correct (4mA at bottom or 20 mA at bottom).
No Unit Detected in WebCal	WebCal cannot detect an EchoSonic II connected to the computer. <ul style="list-style-type: none"> • Check that the Fob is connected to the USB port. • Check that all four wires (Red, Black, White and Green) are securely attached to the Fob. • Check in Device Manager that both drivers (WebCal Configuration & EchoFob) are present.
Internet error. The server name or address could not be resolved.	This is a warning indicating the computer configuring EchoSonic II is not connected to the internet. Click OK to continue. Flowline recommends being connected to the internet for all configurations. Not being connected to the internet will not prevent the EchoSonic II from being configured.
Cannot access some of the features in Configuration	As choices are made in Configuration, WebCal will begin to eliminate functions that are no longer active. To reset Configuration or get access to all the features, click on the Clear Screen button.

User Settings: Fill out the chart below and keep as a record of your configuration.

Tank

Height =	Fill-H =
----------	----------

Loop Fail-Safe (select one)

Hold Last Value	Empty	Full	Overfill (21mA)	Overfill (22mA)
-----------------	-------	------	-----------------	-----------------

Output at Empty (select one)

4mA at Bottom	20mA at Bottom
---------------	----------------

Startup Condition (select one)

Empty	Mid-Tank (12mA)	Full Tank	Overfill (22mA)
-------	-----------------	-----------	-----------------

Advanced (if selected, identify which filter that was activated)

Increase output filtering:	Decrease output filtering:	Stabilize output in dead band	Turn OFF fast level changes	Turn ON noisy start filter
----------------------------	----------------------------	-------------------------------	-----------------------------	----------------------------